

HARNESSING THE POWER OF OPENAI INSIDE PVA

MICROSOFT 365 CALL

03.16.2023

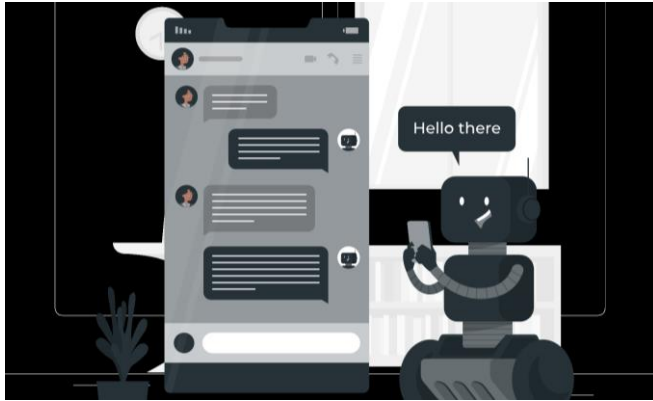
ABOUT ME:

- B.S. in Computer Graphics Technology
- 19+ Years of IT Experience
(Architect, Developer, Consultant, Managing Director)
- Written in a variety of Programming Languages
(TypeScript, JavaScript, C#, PowerShell, PHP, Ruby, ColdFusion, ASP, ActionScript)
- Started with SharePoint 2007 (MOSS) in 2008
- Intelligent Experiences Team Lead at Takeda Pharmaceuticals



MATT JIMISON

KEY COMPONENTS



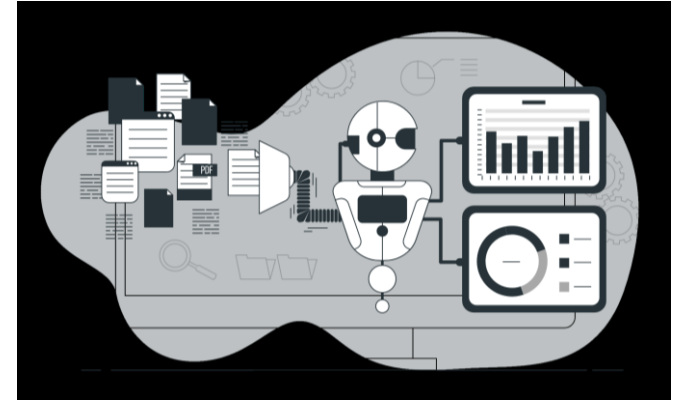
POWER VIRTUAL AGENTS

- Fallback Topics
- Quick Replies
- Adaptive Cards



POWER AUTOMATE

- Getting data
- Updating data



OPENAI

- Text Models (da-vinci)
- Image Models (dall-e)
- Chat Model (gpt-3.5 turbo)



DEMO

LET'S TAKE A LOOK

REFERENCES:

OPENAI COMPLETIONS:

<https://platform.openai.com/docs/api-reference/completions/create>

OPENAI IMAGES:

<https://platform.openai.com/docs/api-reference/images/create>

AZURE OPENAI CHATGPT:

<https://learn.microsoft.com/en-us/azure/cognitive-services/openai/chatgpt-quickstart?tabs=command-line&pivots=programming-language-studio>

POWER VIRTUAL AGENTS UNIFIED CANVAS (PREVIEW):

<https://powervirtualagents.microsoft.com/en-us/blog/now-in-public-preview-power-virtual-agents-new-advanced-authoring-canvas/>

ADAPTIVE CARD DESIGNER :

<https://adaptivecards.io/designer/>

THANK YOU



MATT JIMISON



mattjimison.com



[@mjimison](https://twitter.com/mjimison)

[SEE MORE AT MY BLOG](#)